

Thermo **TRACK-IR**

The Affordable Thermal Imaging Camera



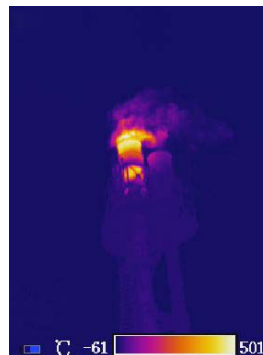
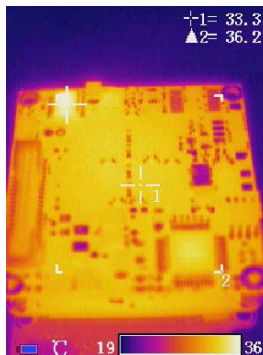
- *SIMPLE TO OPERATE*
- *LIGHT WEIGHT*
- *CRISP IMAGE*
- *VOICE ANNOTATION*
- *LASER POINTER*
- *WIDE TEMP RANGE*
- *ANALYSIS TOOLS*
- *PC SOFTWARE*
- *GREAT VALUE*
- *OPTIONAL WIDE & TELEPHOTO LENSES*

Thermal Imaging Camera

ThermoTRACK-IR 6 and ThermoTRACK-IR 8

Infrared radiation can not be seen by the human eye; however, all objects with a temperature above absolute zero (-273 Deg C), emit infrared thermal radiation. Thermal imagers can convert infrared radiation into electrical signals, thus rendering it visible via an LCD display.

ThermoTRACK-IR's high sensitivity of 65mk can identify the smallest temperature difference from the target object and display it in a crisp color thermal image. Overheating conditions or heat loss due to faults can be easily located and monitored - once corrective action has been taken, infrared imaging can be used to confirm the repair.



APPLICATIONS

- Building energy loss
- Electrical distribution inspection
- Research & Development
- Automation
- Predictive Maintenance
- Pipe insulation inspection
- Electronic controls evaluation
- Quality control programs

- Water damage in walls
- Power line inspection
- Process optimization
- Preventative Maintenance
- Pipe wall wear
- Wear of pipe lining
- Steam trap operation
- Heat transfer in PC boards

KEY FEATURES

- **Excellent thermal image and high accuracy temperature measurement:**
 - ± 2% accuracy, 65mk thermal insensitivity
- **Wide temperature measurement range:**
 - cover -20° to 250° C standard; 1200° C optional
- **Laser pointer:**
 - helps user to locate target quickly and easily
- **Built-in microphone to record 40 sec voice annotation:**
 - allows user to make quick voice comments with every thermal image; the voice annotation is stored permanently with the thermal image
- **Exchangeable IR lenses for more flexibility:**
 - A flexible design allows **ThermoTRACK-IR** to adapt a wide-angle lens or a telephoto lens as needed. With a replaceable lens design, **ThermoTRACK-IR** presents a larger image for distant objects with a telephoto lens, or more details in a landscape scenario with a wide angle lens.
- **High temperature measurement option:**
 - The temperature measurement range can be extended to 1200° C by simply attaching a high temperature filter on to the camera lens.
- **Automatic Hot / Cold / Average spot recognition:**
 - Camera automatically searches out hottest spot (or coldest, or average) in any image - allows for faster fault identification
- **Intuitive operating menu:**
 - Supports single-handed operation for quick camera operation and reduced inspection time
- **Multifunction PC analysis IR software:**
 - ThermoTRACK-IR** comes with its own PC software; "IR Software" allows user to analyze thermal images, listen to voice comment and add digital visible images to support a post inspection report; reports can be edited in Microsoft Word



SALES

SERVICE

COMMISSIONING

TRAINING

TECHNICAL SPECIFICATIONS

	ThermoTRACK-IR 6	ThermoTRACK-IR 8
Detector - Detector type - IR resolution - Pixel pitch	Focal plane array (FPA), uncooled 160 x 120 pixels (19,200 pixels) 25um	Focal plane array (FPA), uncooled 384 x 288 pixels (110,592 pixels) 25um
IR Imaging & Optical - Spectrum range - Field of view (FOV) / min. focus distance	8-14 um 21° x 16° / 0.15m (standard lens) 35° x 27° / 0.05m (optional wide angle lens) 4° x 3° / 0.8m (optional telephoto lens)	8-14 um 18° x 14° / 0.15m (standard lens) 30° x 23° / 0.1m (optional wide angle lens) 9° x 6° / 0.8m (optional telephoto lens)
Image Presentation - Spatial res. (IFOV) - Thermal sensitivity - Image refresh rate - Focus - Electronic zoom - Display	2.3mrad (standard lens) < 65mk at 30° C (NETD) 50 / 60 Hz Manual 2x Built-in 3.5" color LCD	1.0mrad (standard lens) < 65mk at 30° C (NETD) 50 / 60 Hz Manual 2x Built-in 3.5" color LCD
Measurement - Temperature range - Accuracy - Measurement spot - Measurement area - Line profile - Isotherm analysis - High temp. alarm - Emissivity correction - Ambient correction - Multiple Language	-20° C to +120° C / 0° C to +350° C (selectable) up to 1200° C optional ±2° C or ±2% of reading Up to 4 moveable spots Up to 3 moveable boxes, auto capture Vertical and horizontal Detect high/low temperature / interval Voice / color Adjustable, 0.01 to 1.0 Auto 10 (English, French, Italian, German, Spanish, Portuguese, Russian, Korean, Japanese, Chinese Traditional and Simplified)	-20° C to +120° C / 0° C to +350° C (selectable) up to 1200° C optional ±2° C or ±2% of reading Up to 4 moveable spots Up to 3 moveable boxes, auto capture Vertical and horizontal Detect high/low temperature / interval Voice / color Adjustable, 0.01 to 1.0 Auto 10 (English, French, Italian, German, Spanish, Portuguese, Russian, Korean, Japanese, Chinese Traditional and Simplified)
Image Storage - Storage type - File format - Voice annotation	Built-In flash card holds up to 1500 images JPEG, 14 bit measurement, data included 40 second voice recording via integral mic, stored with each image	Built-In flash card holds up to 800 images JPEG, 14 bit measurement, data included 40 second voice recording via integral mic, stored with each image
Laser Spotting - Classification type	Class 2, 1mW/635nm, Red	Class 2, 1mW/635nm, Red
Power System - Battery type / run hrs - Power / saving	Replaceable / rechargeable Li-ion / 3 hours 12V ±5% / power saving user defined	Replaceable / rechargeable Li-ion / 3 hours 12V ±5% / power saving user defined
Environmental Data - Operating temp range - Storage temp range - Shock / Vibration	-20° C to + 50° C (90% non-condensing humidity) -40° C to + 70° C (90% non-condensing humidity) 25G IEC68-2-29 / 2G IEC68-2-6	-20° C to + 50° C (90% non-condensing humidity) -40° C to + 70° C (90% non-condensing humidity) 25G IEC68-2-29 / 2G IEC68-2-6
Interfaces - External DC input - Audio / Video output - USB	Yes Yes / PAL/NTSC For image transfer to PC	Yes Yes / PAL/NTSC For image transfer to PC
Physical Data - Size, L x W x H - Weight - Tripod mounting	330mm x 95mm x86mm 650 grams ¼-20 thread	330mm x 95mm x86mm 650 grams ¼-20 thread

V11.10



44 Forest Drive / Brighton / Ontario / K0K 1H0 / Canada
E: info@spectrum-instruments.com P: 613-439-8767