

Thermal Cameras *c/w auto focus* Model AT15 & AT35

Features

Excellent thermal image and high accuracy
Bright LED light, laser pointer

Wide temperature measurement range:
-20 to 600, up to 1200°C optionally

Built-in digital camera

Wide-angle and telephoto IR lens

Automatic/Hot/Cold/Average
temperature detection

Applications

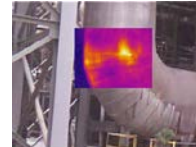
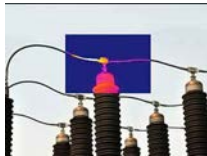
Building Diagnostics

Electrical/Mechanical Inspection

Research & Development

Automation Applications

Preventative & Predictive Maintenance



Technical Specifications

Item	AT15	AT35
Detector Data		
Detector Type	Uncooled FPA, 160x120 pixels	Uncooled FPA, 384x288 pixels
Pixel pitch	25µm	
Spectral range	8~14µm	
IFOV/Mini Focus	21°x16°/0.15m (standard lens)	21°x16°/0.4m (standard lens)
	42°x32°/0.1m (wide lens, optional)	38°x28°/0.3m (wide lens, optional)
	10°x8°/1m (telephoto lens, optional)	11°x8.5°/1.2m (telephoto lens, optional)
Spatial resolution(IFOV)	25µm	
Spectral range	8~14µm	
IFOV/Mini Focus	21°x16°/0.15m (standard lens)	21°x16°/0.4m (standard lens)
	42°x32°/0.1m (wide lens, opt'l)	38°x28°/0.3m (wide lens, opt'l)
	10°x8°/1m (telephoto lens, opt'l)	11°x8.5°/1.2m (telephoto lens, opt'l)
Spatial resolution(IFOV)	2.3mrad	1.2mrad

Sensitivity/NETD	<60mk @ +30	<80mk @ +30
Image Presentation		
Image Display	3.2" 270° tilt-able LCD	
Image modes	Thermal image, visual image, thermal fusion, picture-in-picture, thumbnail gallery	
Thermal fusion	IR image shown above, below or within temp interval on visual image	
Picture in Picture	Resizable and movable IR area on visual image	
Frequency	50Hz(PAL)/60Hz(NTSC)	
Focus	Auto/Motor	
Digital Zoom	1-4x Continuous	1-8x Continuous
Visual camera	3.0 mega pixel	
Spotlight	10cd/m ²	
Measurement		
Temperature Range	-20 ~ 250 (Industrial)	
	-20 ~ 600 (optional A)	
	-20 ~ 1200 (optional B)	
Temperature Accuracy	±2 deg or ±2% of reading	
Spot Meter	4 adjustable spots	
Area	3 adjustable boxes with max./min./average	
Line profile	Horizontal/vertical	
Isotherms analysis	Detect high/low temperature/interval	
Dew point alarm	No	
Hot/cold spot Auto detection	Max/Min/Average temp	
Emissivity correction	Variable from 0.01~1.0	
Alarm	Voice and Color	
Multiple language menu	10 languages (English, French, Italian, German, Spanish, Portuguese, Russian, Korean, Japanese, and Chinese)	
Set-up Commands		
Real-time Video	Transfer via USB	
Color palettes	Iron, anti-iron, feather red, black hot, white hot, medical	
Set-up commands	Date/time, temperature units C/F/K, language, scale	
Measuring Calibration	Automatic, based on inputs	
Image Storage		
Storage type	4G SD card, Building-in flash	
Storage capacity	Up to 700 images in built-in flash	Up to 500 images in built-in flash card
	Up to 11200 images in 4G SD card	Up to 8000 images in 4G SD card
Storage format	Standard JPEG, including measurement data	
Periodic image storage	user defined, 7 seconds at least	
Laser Pointer		
Grade/Type	Class II, 1mW/635nm red	
Power System		
Battery	Li-ion, ≥3 hours operating time	
Charging system	In camera or AC adapter	
AC supply	110 240V AC 50/60Hz 5V DC output	
Voltage	5V±5% DC	
Power management	Automatic shutdown(user selectable)	
Environmental Data		
Operating temperature range	-20 to +50	

Spectrum Instruments Ltd

44 Forest Drive, Brighton, Ontario K0K 1H0 Canada P: 1-800-778-3428 E: info@spectrum-instruments.com

Storage temperature range	-40+70
Humidity	≤90% non-condensation
IP level	IP54
Physical Data	
Weight , size (LxWxH)	390g , 128×62×154 mm
Data Communication Interfaces	
USB	Data transfer to and from PC
Video output	PAL/NTSC
Audio output	Yes
Packing	
Standard	Thermal imaging camera with Standard lens, 2 Batteries, Battery charger, USB cable, SD card, SD card reader, CD-ROM software and User Manual, Adapter, Warranty card, Calibration certificate
Optional Accessories	Infrared lens, Li-ion battery