

ThermoTRACK-IR AT 4 / AT 8

THERMAL IMAGER



2-meters drop resistant



Bluetooth audio transmission



3 million daylight image



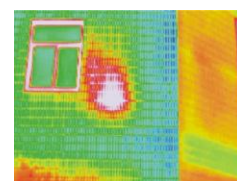
3.6 inch touch screen



Dual LED fill lights make clearer shot



Fusion display of IR & daylight image

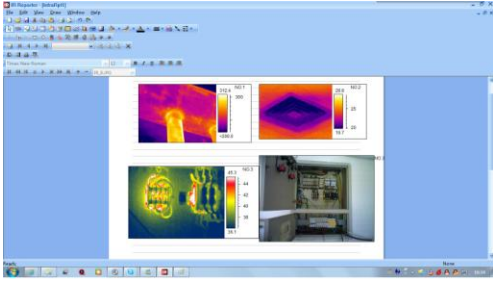


Specification

Items		AT4	AT8
Detector characteristics	Detector type	Un-cooled FPA micro-bolometer	
	Array size/format	160x120	384x288
Image characteristics	Field of view/min focus distance	25°x19°/0.5m	
	Spatial resolution (IFOV)	2.73mrad	1.37mrad
	Thermal sensitivity	≤0.08°C @30°C	≤0.06°C @30°C
	Frame frequency	50Hz	

	Focus	Manual		
	Zoom	2X, 4X		
	Spectral range	8-14um		
	Built-in CCD camera	3 million pixels, COMS camera modules, 2 LED lights		
Image display	LCD	3.6" TFTLCD, 640x480 Touch screen		
	Image display	IR and Visual image can be shifted fast; image fusion.		
	Image processing	Automatic / manual/ auto-enhancement		
Measurement	Temperature ranges	-20°C- +350°C (can expanded to 1000°C)	-20°C- +600°C (can expanded to 1200°C)	
	Accuracy	± 2 °C or ± 2% of reading, Whichever is greater		
	Measurement correction	Automatic / manual		
	Measurement mode	Up to 5 movable spots. Up to 5 movable areas (maximum, minimum and average temperatures). Up to 2 movable lines. Line profile. Isotherms. Temperature difference. Alarm(voice, color)		
	Image control	Color palette	11 palettes changeable	
		Image adjustment	Auto/manual gain and brightness	
	Setup functions	Date/time, temperature unit, language		
	Emissivity correction	Variable from 0.01 to 1.0		
	Background temperature correction	Automatic corrections according to user input		
Atmospheric transmission correction	Automatic correction according to user input object distance, humidity and temperature			
Image storage	Storage card	8G SD card, max 32G		
	Storage mode	Manual/Auto single file saving, IR and Visual image link saving, fusion recording		
	File format	Thermal: JPEG with original thermal measurement data included; H.264 in network recording		
	Visual format	JPEG; H.264 with fusion.		
	Voice annotation	Input via built-in microphone up to 60 seconds of digital voice clip per image stored with image		
Laser pointer	Laser locator	Class 2, 1mw/635nm(red), IEC 60 285		
Power source	Battery type	Li-Ion, rechargeable		
	Battery operating time	3 hours continuous operation		
	Battery charging mode	Intelligent charger or power adaptor 12V(optional) to random charge		
	Power saving	Auto-sleep and auto-shut down		
	External power	12V DC		
Environment	Operating temperature	-15°C-+50°C		
	Humidity	≅ 90 % non-condensing		
	Encapsulation	IP54		
	Drop test	2 m		
Physical characteristics	Weight	1Kg		
	Dimension	105mmx245mmx230mm		
Interface	SD card slot	Micro SD card cassette		

	External network input	With function of IP address real-time image transferring setup
	Video output	YES
	Audio / data transfer	Bluetooth (earphone/RS232)



Analysis Software- Free of Charge
 The images shot by 3 & 7 could be downloaded fastly, and imported to the analysis software, to create WORD-FORM report for all the graphic data analysis.



Spectrum Instruments Ltd.
 44 Forest Drive, Brighton, ON K0K 1H0 Canada

Phone: 1-800-778-3428

Fax: 1-866-782-0106

E-mail : info@spectrum-instruments.com

www.spectrum-instruments.com