

# CATSEYE 6000XPro

Whether you're working in the middle of the day to inspect leaking pipe or checking equipment under direct sunlight – a CatsEye 6000XPro is essential.



**CATSEYE  
6000XPro**



## Brighter Image Quality

The CatsEye 6000XPro is professionally designed to help inspectors working under the sun. This unique sun-shade design is capable of blocking sunlight by 50%. Additionally, the sun shade design ensures a crisp clear image while protecting the monitor from bumps & scratches.

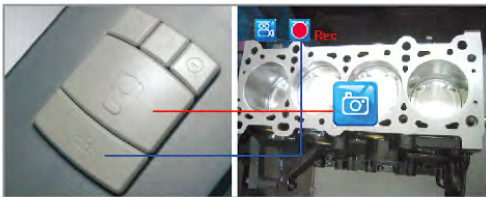
## Designed for Industrial Use

Automotive, Aerospace, Marine, Locksmiths, Electrical  
& Mechanical, HVAC, Plumbing, Welding, Carpentry and Piping Inspections



## Snap-shot While Recording (SWR)

Research shows that 85% of video endoscope owners use video reordering function more often than taking photo. However, still images are essential for inspection reports. "SWR" function allows user to take photo while recording or replaying video. Never miss any important moments again!



## Zoom-IN / Zoom-OUT

A magnifying function operates in camera mode. Simply click on magnifying glasses button to zoom in/out the image. Support up to 2X Digital Zoom in order to receive clear viewing.



## Photo Comparison

A build-in photo comparison function allows user to see the difference of 2 photos at inspection site without using computer software.



## Screen Image Rotation Ability

6000XPro features image rotation functions allowing user to turn image into four directions—90°, 180°, 270° and 360°. No need to adjust camera probe anymore!



# CATSEYE 6000XPro

## Large 3.5" TFT LCD Display

6000XPro is embedded with a 3.5" TFT LCD monitor provides superior image quality photos for inspector to see.



## Supplementary Probe Options

6000XPro's support full range of video probe diameter from 3.9mm~28mm, length from 1meter to 30 meter long, and flexible & semi-rigid type material to choose from.



## Build-in Tripod Mount & Magnetic Stripes

6000XPro features a tripod mount and strong Magnetic Stripes that allows for convenient use purpose.



## Video Output

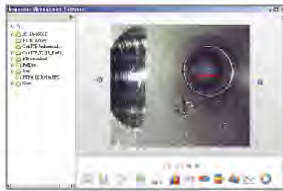
Recorded videos & images can be displayed directly to a TV screen for large screen viewing. Support PAL/ NTSC video system.

## USB Connection

6000XPro is capable to transfer captured images and view from PC. Support Windows™ 2000 or later version. No special software is required to playback the JPG and ASF files.



# CATSEYE 6000XPro



## Inspection Management Software (Optional)

Inspection Management Software is designed for image viewing, distance measuring, and image comparison. It helps inspectors to verify measurement after leaving the inspection site.

## Products Specifications



System		
Sun-Shade Design	✓	✓
Photo Snap-Shot	✓	✓
Video Recording	✓	✓
Digital Zoom In/Out	✓	✓
Photo/ Image Rotation	✓	✓
Photo Comparison	✓	✓
Snap-Shot While Recording/Replaying	✓	✓
Distance Measurement Software	Optional	
Video Storage Format	MPEG4/AVI 30f/s	MPEG/ASF 30f/s
Image Storage Format (Maximum)	JPEG, 640X480 resolution	JPEG, 640X480 resolution
Storage Capacity	Up to 32GB	Up to 16GB
Other Specifications		
TV-Out (NTSC /PAL)	✓	✓
USB to PC Connection	✓	✓
Magnetic Stripes	✓	✓
Tripod Mount ( Tripod not include)	✓	✓
Dimensions (L x W x H)	215 x 115x 35mm	215 x 115x 35mm
Weight	430g	350g
System operating temperature	-10°C ~ 50°C	- 10°C~ 50°C
Relative Humidity	30%~90% RH	30%~90% RH
Power Type & PSU Spec.		
Power Supply	DC 5V	DC 5V
Rechargeable Battery	Lithium-ion 3.7V 2500MAH	Lithium-ion 3.7V 2500MAH
Battery Usage	Up to 5 Hours	Up to 4 Hours
Accessories		
SD Card	2GB Included	2GB Included
Power Adapter	✓	✓
Video Composite Cable	✓	✓
USB Cable	✓	✓

## Probe & Accessories

Probe Diameter	Resolution	Available Length (Meter)	Tube Type	Articulating Probe	Available Side Mirror
3.9 mm	QVGA	1,2,3,5,10	Flexible	-----	35° 45° 55°
4.0 mm	QVGA	1,2,3,5,10	Flexible	-----	35° 45° 55°
5.5 mm	QVGA	1,2,3,5,10,20,30	Flexible	Support 1-2 M	35° 45° 55°
5.5 mm	VGA	1,2,3,5,10	Flexible	Support 1-2 M	35° 45° 55°
5.5 mm	VGA+HB	1,2,3,5,10	Flexible	Support 1-2 M	35° 45° 55°
5.8 mm	VGA	1,2,3,5,10	Semi-Rigid Type	Support 1-2 M	35° 45° 55°
8.0 mm	VGA	1,2,3,5,10	Semi-Rigid Type	-----	35° 45° 55°
10 mm	VGA	1,2,3,5,10	Semi-Rigid Type	-----	35° 45° 55°
25 mm	VGA	10,20	Fiber Glass	-----	-----
28 mm	VGA	10,20	Fiber Glass	-----	-----

Other Accessories also available, please contact us for more product information.

