



## Not just an overall reading...

- Full spectral data with 3,200 lines of resolution with sample rates up to 20,000Hz
- For machines operating > 100 rpm
- Battery operated

# WAM-X Wireless Vibration Monitoring

## Wireless Tri-axial High Temperature Accelerometer Monitors Both Temperature and Vibration

INTRODUCING WAM-X  
Instant install and wire free  
Internal 4.2 ah Battery  
Long Range Radio  
Waterproof  
High Temp 225F

### VERSATILE

The WAM-X is a truly wireless Tri-axial Accelerometer system measuring vibration and temperature. An expansion port coupled with Internal memory and advanced signal processing support a wide variety of additional inputs including vibration, temperature, pressure, level and flow.

### ASSET PROTECTION

The WAM-X complements your current condition monitoring methods and works seamlessly with the Spectrum Instruments Ltd WAM product and software suite.

### LONG RANGE RADIO

Offering long range 900MHz technology, the WAM-X system provides an easy installation and integration path into your existing IT



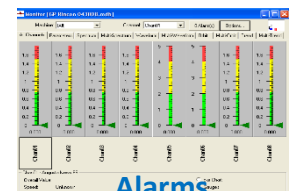
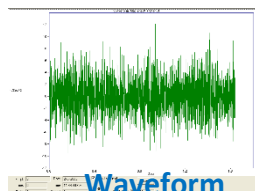
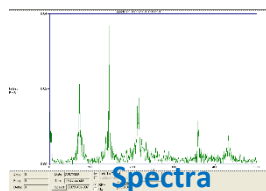
2.5" Ruggedized Condensed Form Factor

**HIGH temperature, WIRE FREE tri-axial sensor with low noise internal PIEZO accelerometers and FMAX up to 6 kHz. Onboard temp sensor.**

- The WAM-X is an excellent solution for a wide variety of equipment types including: Machine rolls, Compressors, Overhead cranes, Mobile equipment, Drag lines, and Variable speed equipment.
- The WAM-X is well-suited for environments where equipment is inaccessible or taking vibration data is difficult, requires equipment outage, or is perhaps unsafe for personnel.
- Simultaneous sampling of 3 internal XYZ accelerometers and up to 4 external accelerometers at sample rates up to 20kHz.
- Supports 6 external DC/Process inputs with onboard filtering.
- Long Range wireless connectivity using a high powered advanced 900MHz radio.
- On board buffer memory; 3200 Lines of resolution per channel.

**WAM-X** is a fully wireless battery powered tri-axial accelerometer combining a high powered long range radio, onboard memory and accelerometers, and an advanced signal processing system. 3200 lines of resolution are available at variable sampling rates between 62 Hz and 20,000 kHz. **WAM-X** includes an optional extender port that can be used for remote power or to attach up to 4 additional accelerometers and 6 DC inputs.

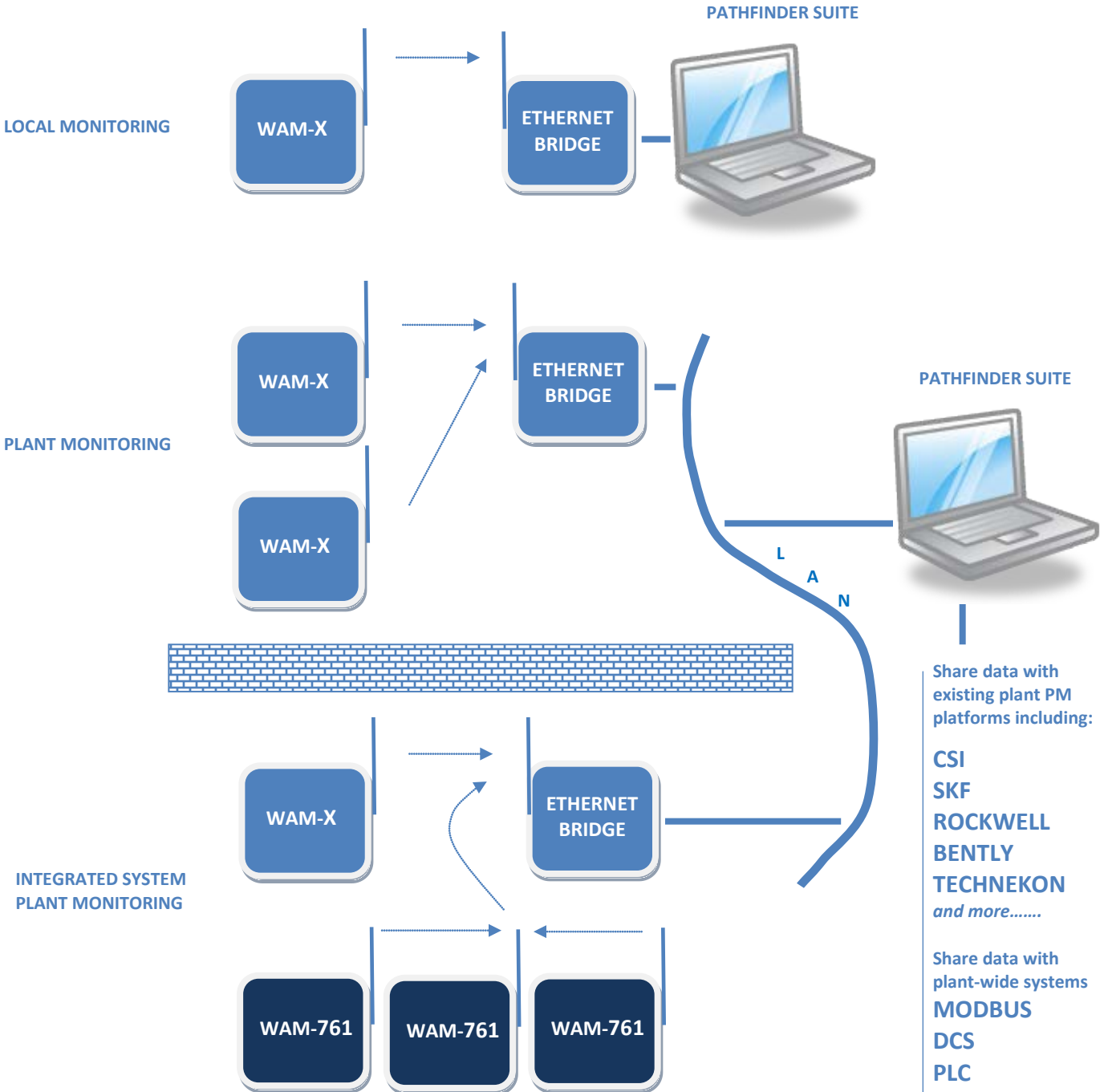
### SOFTWARE



**SPECTRUM INSTRUMENTS LTD**

44 Forest Drive, Brighton, ON K0K 1H0 Canada P: 1-613-439-8767 E:info@spectrum-instruments.com

# CONNECTIVITY



“Not just an overall reading”

## SPECIFICATION

<b>MEASUREMENTS:</b>	Standard: 3 vibration simultaneously and one(1) temp – integral Optional: 4 additional IEPE vibration measurements 6 additional DC inputs (process signals – flow, pressure etc.)
<b>FREQUENCY RESPONSE:</b>	2 Hz - 6,000 Hz (integral tri-axial sensor) 0.8 Hz - 20,000 Hz (external optional vibration sensors subject to model) DC for all external temperature and process inputs
<b>FFT RESOLUTION:</b>	3200 lines
<b>SAMPLE RATE:</b>	User adjustable up to 20,000 Hz
<b>TRANSMISSION FREQUENCY:</b>	900 MHz (Mesh Network)
<b>TRANSMISSION DISTANCE:</b>	Varies with location/obstructions etc.; 1500' or more can be attained
<b>TEMPERATURE RATING:</b>	0 - 225 Deg. F** <i>(**rating under review; anticipating reduced low end temperature rating)</i>
<b>POWER SOURCE:</b>	<b>INTEGRAL BATTERY PACK</b> 4.2 amp hour rated; field replaceable – see PN below -provides up to 1 Year of operation <i>(when configured for two(2) samples daily and new battery)</i> <b>OPTIONAL POWER SUPPLY</b> 24 VDC for continuous operation – see PN below
<b>MOUNTING:</b>	¼-28 stud or optional magnetic mount
<b>CONSTRUCTION:</b>	Stainless Steel & Delrin
<b>PHYSICAL:</b>	2.5" Diameter x 3.0"High
<b>ENVIRONMENTAL:</b>	Waterproof

## HOW TO ORDER

<b>PART NUMBER</b>	<b>DESCRIPTION</b>
<b>WAM-X</b> .....	Wireless High Temperature Tri-axial Vibration Monitor (3 axis simultaneous vibration measurement and 1 temperature measurement)
<b>PATHFINDER SUITE</b> .....	PC software suite that supports WAM-X wireless tri-axial monitor and WAM-761 machine mounted modules; provides communication support, data archiving, data graphing, alarming etc. (computer not included)
<b>WAM-X-BAT</b> .....	Replacement battery pack for WAM-X (battery pack and connector assembly)
<b>WAM-X-PS</b> .....	24 VDC power supply, 100-220VAC, 50-60 Hz rated
<b>WAM-X-EXC</b> .....	External connector (to connect external vibration or process inputs)
<b>S-100-XXXX</b> .....	IEPE accelerometers (where XXX defines configuration)

V12.14R1.0



44 Forest Drive, Brighton, ON K0K 1H0 Canada  
P: 1-800-778-3428 F: 1-866-782-0106  
E: [info@spectrum-instruments.com](mailto:info@spectrum-instruments.com) W: [www.spectrum-instruments.com](http://www.spectrum-instruments.com)