



Model 785A

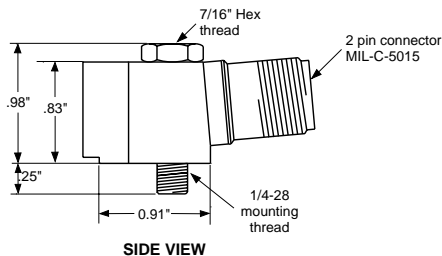
Low Profile Industrial Accelerometer

COMMON APPLICATIONS

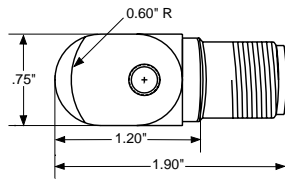
- General Purpose
- Moderate Industrial Environments
- Conveyors and Drives

FEATURES

- Corrosion resistant
- Hermetic design
- Ground isolated
- ESD protection
- Reverse wiring protection
- RFI protection



SIDE VIEW



BOTTOM VIEW

DYNAMIC

Sensitivity, $\pm 10\%$, 25°C	100 mV/g
Acceleration Range	80 g peak
Amplitude Nonlinearity	1%
Frequency Response:	
$\pm 10\%$	2.0 - 8,000 Hz
± 3 dB	1.0 - 12,000 Hz
Resonance Frequency, mounted, minimum	30 kHz
Transverse Sensitivity, max	5% of axial
Temperature Response	-50°C -10%
	+120°C +7%

ELECTRICAL

Power Requirement: voltage source	18 - 30 VDC
current regulating diode	2 - 10 mA
Electrical Noise, equiv. g, nominal:	
Broadband 2.5 Hz to 25 kHz	1,260 μ g
Spectral 10 Hz	11 μ g/ \sqrt Hz
100 Hz	6 μ g/ \sqrt Hz
1000 Hz	6 μ g/ \sqrt Hz
Output Impedance	100 Ω
Bias Output Voltage, nominal	12 VDC
Grounding	case isolated, internally shielded

ENVIRONMENTAL

Temperature Range	-50 to 120°C
Vibration Limit	500 g
Shock Limit, min.	5,000 g
Sealing	hermetic
Base Strain Sensitivity, max	0.002 g/ μ strain

PHYSICAL

Weight	85 grams
Case Material	316L stainless steel
Mounting	1/4 - 28 captive hex head screw with 0.046" diameter safety wire hole
Output Connector	2 pin MIL-C-5015 style
Mating Connector	R6 type
Recommended Cabling	J10 / J9T2A

CONNECTOR PIN	FUNCTION
SHELL	case
A	power / signal
B	common

NOTES: 1 At 90 inch/lb. torque.



98709 Rev.A 8/00

Due to continued research and development, Wilcoxon Research reserves the right to amend this specification without notice.

