

SI-150S Premium Accelerometer

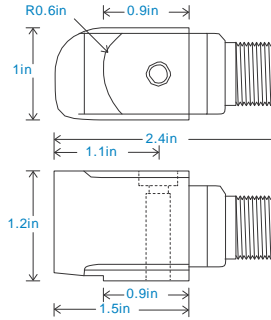
AC acceleration output via 2 Pin MS Connector

Key Features

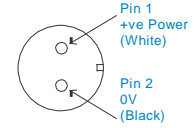
- For use with data collector and online systems
- Side entry for easy access
- Customizable features

Industries

Building services, Pulp and Paper, Mining, Metals, Utilities, Automotive, Water, Pharmaceutical



Connection Details



Technical Performance

Mounted Base Resonance	see: 'How To Order' table (nominal)
Sensitivity	+/-5% or ± 10% Nominal 80Hz at 72°F
Frequency Response	90cpm (1.5Hz) to 600kcpm (10kHz) ± 5% 30cpm (0.5Hz) to 720kcpm (12kHz) ± 10% 12cpm (0.2Hz) to 900kcpm (15kHz) ± 3dB
Isolation	Base isolated
Range	see: 'How To Order' table
Transverse Sensitivity	Less than 5%

Mechanical

Case Material	Stainless Steel
Sensing Element/Construction	PZT/Shear
Mounting Torque	5.9ft. lbs
Mounting Bolt provided	see: 'How To Order' table x 1.4in long
Weight	7.2 oz. (nominal)
Shielded Cable Assembly	see: www.spectrum-instruments.com
Connector	SI-AA004 - non-booted SI-AA053 or SI-0054 - booted
Mounting Threads	see: 'How To Order' table

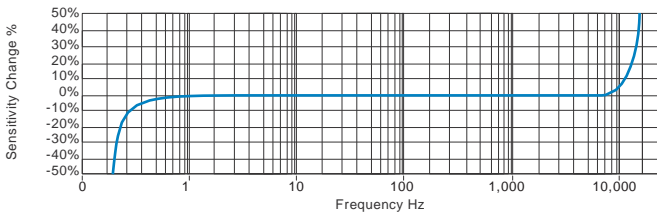
Electrical

Electrical Noise	0.1mg max
Current Range	0.5mA to 8mA
Bias Voltage	10 - 12 Volts DC
Settling Time	1 second
Output Impedance	200 Ohms max.
Case Isolation	>10 ⁸ Ohms at 500 Volts

Environmental

Operating Temperature Range	-67 to 266°F
Sealing	IP68
Maximum Shock	5000g
EMC	EN61326-1:2013

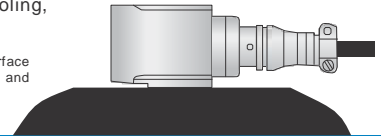
Typical Frequency Response (at 100mV/g)



Applications

Fans, Motors, Pumps, Compressors, Centrifuges, Conveyors, Air Handlers, Gearboxes, Rolls, Dryers, Presses, Cooling, VAC, Spindles, Machine Tooling, Process Equipment

Vibration sensor should be firmly fixed to a flat surface (spot face surface may be needed to be produced and cable anchored to sensor body.)



How To Order

Product Prefix SI - Spectrum Instr.	Product Series 150 - Premium Industrial Vibration Sensor	Cable Length (if integral cable) UXX - length specified in feet												
S	I	1	5	0	S	X	X	X	X	X	X	X	X	X
Extra Options (if required) F - Filtered L - 316L Stainless Steel RT - Temperature Output PT100 S - 90° Side Exit T - Temperature Output Y - 5% tolerance on sensitivity		Sensitivity 010 - 10mV/g ±800g 030 - 30mV/g ±250g 050 - 50mV/g ±160g 100 - 100mV/g ±80g 250 - 250mV/g ±32g 500 - 500mV/g ±16g	Range ±800g ±250g ±160g ±80g ±32g ±16g	Resonant Frequency 1,620kcpm (27kHz) 1,500kcpm (25kHz) 1,380kcpm (23kHz) 1,260kcpm (21kHz) 1,140kcpm (19kHz) 1,020kcpm (17kHz)	Cable/Connector 01 - Poly 02 - Braided 07 - Silicon 08 - Flame Retardant 50 - 2 Pin MS 54 - M12	Mounting Threads 02 - ¼-28" UNF Male 06 - M6 x 1mm Male 08 - M8 x 1.25mm Male								



www.spectrum-instruments.com
info@spectrum-instruments.com

We reserve the right to alter the specification of this product without prior notice

